



Designers' Choice

COIN CELL PC BATTERY HOLDERS

20mm to 30mm Sizes



SINGLE CELL HOLDER
(3-VOLT)

DUAL CELL HOLDER
(6-VOLT)

Single and Dual "Printed Circuit" Cell Holders for Lithium Coin Cells. Designed for easy battery replacement. Will accommodate diameters from 12mm to 30mm and heights from 1.6mm to 7.7mm. Some holders will accept more than two cells if they fall within the heights specified.

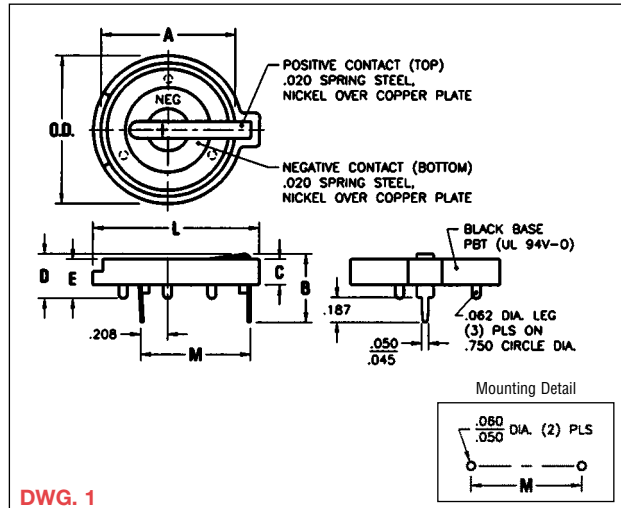
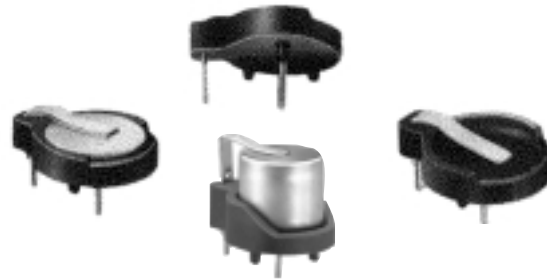
IDEALLY SUITED FOR...

- Duracell, Eveready, Panasonic, Ray-O-Vac, Sanyo, Varta, Toshiba, Seiko and other major battery manufacturers
- Computer memory, power transfer and back-up systems
- Video and telecommunications power back-up
- Preprogrammed video and electronic games
- Microprocessors and Microcomputer memory hold
- Notebook and laptop applications
- Emergency power systems
- Industrial and commercial security and alarm systems
- Communications power sources
- Miniaturized battery power devices

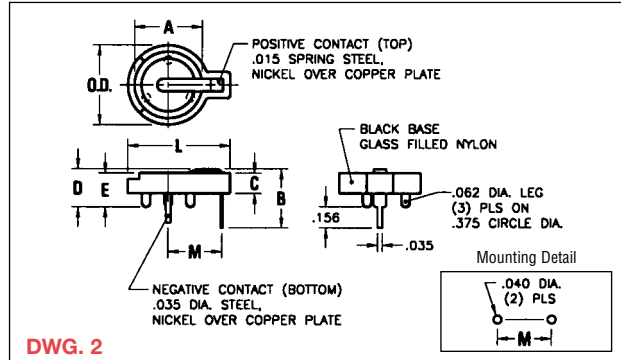
DESIGN ADVANTAGES...

- Low profile for high density packaging
- Reliable spring tension assures low contact resistance
- Retains battery securely to withstand shock and vibration
- Unique notched slots assure quick and easy battery insertion and replacement
- Base material UL Rated 94V-0. Impervious to most industrial solvents
- Operating temperature range: -60°F to +293°F (-50°C to +145°C)
- Advanced air-flow design pattern enhances air circulation around battery
- Nickel-over-copper plated spring steel contacts feature clearly marked polarities to help guard against improper insertion

12mm to 16mm & 1/3 "N" Sizes



DWG. 1



DWG. 2

CAT. NO.	DWG. NO.	NO. OF CELLS	DIMENSIONS								BATTERY CROSS REFERENCE	
			A	B	C	D	E	L	O.D.	M	CELL	
499	2	1	.495	.695	.250	.580	.350	.750	.593	.393	"1/3N"	DURACELL, EVEREADY, PANASONIC, RAY-O-VAC SANYO, SONY, SEIKO, TOSHIBA, VARTA DL 1/3N, K58L, CR 1/3N
500	2	1	.495	.435	.150	.280	.250	.750	.593	.393	12mm	BR1216, CR1216, BR1220, CL1220, CR1220, BR1225
501	2	2	.495	.505	.250	.380	.350	.750	.593	.393		
502	2	1	.635	.505	.150	.312	.250	.897	.750	.463	16mm	BR1616, CR1612, CR1616, CR1620, CR1632
103	1	1	.796	.513	.195	.335	.295	1.130	.896	.807	20mm	BR2016, CR2016, DL2016, BR2020, CL2020, BR2025, CR2025, DL2025, BR2032, CR2032, DL2032
106	1	1	.796	.513	.195	.335	.295	1.219	1.093	.807		
1026	1	2	.796	.630	.312	.452	.412	1.219	1.093	.807		
104	1	1	.911	.513	.195	.335	.295	1.150	1.000	.807		
107	1	1	.911	.513	.195	.335	.295	1.219	1.093	.807	23mm	BR2320, CL2320, CR2320, BR2325, CR2325, DL2325, BR2330, CL2330, BR2335, CR2354**
1027	1	2	.911	.630	.312	.452	.412	1.219	1.093	.807		
105	1	1	.985	.513	.195	.335	.295	1.219	1.093	.807	24mm	CR2430, DL2430, CR2450*, DL2450*, CR2477†
1025	1	2	.985	.630	.312	.452	.412	1.219	1.093	.807		
1025-7	1	1	.985	.681	.312	.503	.412	1.219	1.093	.807		
301	1	1	1.187	.513	.195	.335	.295	1.425	1.297	.807	30mm	BR3032

* For Cat. No. 1025 (1) cell only. ** For Cat. No. 1027 (1) cell only. † For Cat. No. 1025-7 only.

COIN CELL BATTERY HOLDERS

Designers' Choice

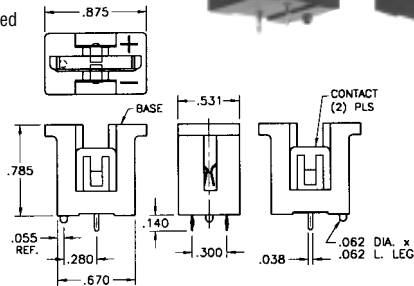


VERTICAL 20mm COIN CELL HOLDERS

COMPACT

This space saving vertical design features a rugged, lightweight body that mounts squarely and securely on PC boards for easy installation and replacement of batteries. Reliable spring tension assures low contact resistance.

- Accepts all major manufacturers' 20mm diameter batteries
- Molded notch prevents improper insertion of 2032 size cells
- Space saving design for high density packaging
- Retains cells securely, withstands shock and vibration
- Polarity clearly marked
- Mounts securely for wave soldering
- Temp range -60°F to +293°F (50°C to +145°C)



MATERIAL

Contacts: .012 Spring Steel, Tin over Nickel Plate

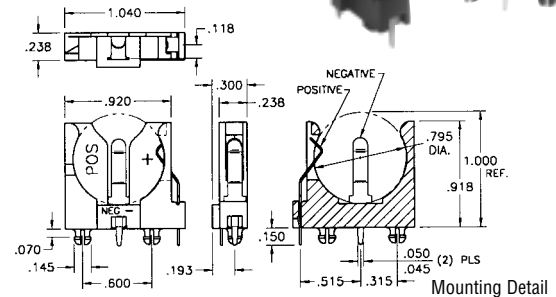
Base: PBT, UL Rated 94V-0

CAT. NO. 1067

SLIMLINE

A "unique" space saving design. The battery is installed vertically from the top. The contacts of this holder are polarized to assure proper continuity and circuit protection.

- Polarized holder
- Mounts securely for wave soldering
- Reliable spring tension assures low contact resistance
- Retains 20mm batteries securely to withstand shock and vibration
- Temp range -60°F to +293°F (50°C to +145°C)



MATERIAL

Contacts: .016 Spring Steel, Tin over Nickel Plate

Base: PBT, UL Rated 94V-0

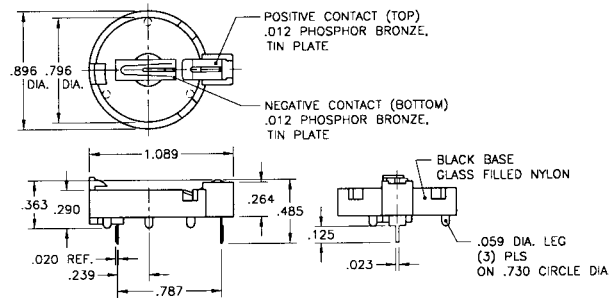
CAT. NO. 1065

COMPACT 20mm COIN CELL HOLDER



The "Ultimate" in space saving design. This 20mm coin cell holder allows "pop-in" entry of batteries using the minimum amount of space. Finger pressure lever allows batteries to disengage from holder.

- Suitable for 2025 and 2032 cells
- "Pop-in" design using minimum space
- Finger pressure lever disengages battery
- Reliable spring tension assures low contact resistance
- Retains batteries securely to withstand shock and vibration
- Temp range -60°F to +293°F (50°C to +145°C)



MATERIAL

Contacts: .012 Phosphor Bronze, Tin Plate

Base: Glass Filled Nylon, UL Rated 94V-0

CAT. NO. 1066

SURFACE MOUNT COIN CELL HOLDERS



Available on Tape and Reel

SMT Design - Holders for 20mm and 23mm Lithium Coin Cell Batteries

- Temp. range -60°F to +540°F (-50°C to +282°C)
- Ideal for memory back-up applications
- Polarity clearly marked (+)
- UL approved material, 94V-0
- Rugged construction, light weight
- Compatible with vacuum and mechanical pick & place assembly systems
- Low profile for high density packaging
- SMT solder tail with "Flow-Hole" design for increased joint strength
- Viewable solder tails assures reliable joint inspection
- Safe for all soldering & reflow operations
- All conductive polystyrene carrier tape meets ANSI/EIA - 481 standard

SMALL PAD PATTERN

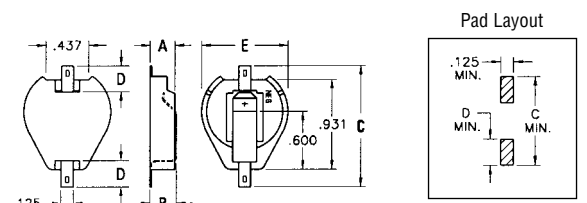
CAT. NO.	ON TAPE	CELLS	A	B	C	D	E	CELL	BATTERY
1061	1061TR	1	.256	.290	1.015	.156	.896	20mm	2016*, 2020, 2025, 2032
1062	1062TR	2	.375	.406	1.015	.156	.896	23mm	2320, 2325, 2330
1071	1071TR	1	.256	.290	1.015	.156	1.000		

*Cat. No. 1061 (1 or 2 cells); Cat. No. 1062 (3 cells)

LARGE PAD PATTERN

CAT. NO.	ON TAPE	CELLS	A	B	C	D	E	CELL	BATTERY
1063	1063TR	1	.256	.290	1.250	.278	.896	20mm	2016*, 2020, 2025, 2032
1064	1064TR	2	.375	.406	1.250	.278	.896	23mm	2320, 2325, 2330
1073	1073TR	1	.256	.290	1.250	.278	1.00		

*Cat. No. 1063 (1 or 2 cells); Cat. No. 1064 (3 cells)



MATERIAL: Contacts: .015 Steel, Tin Plate Base: Nylon, Stanyl-46

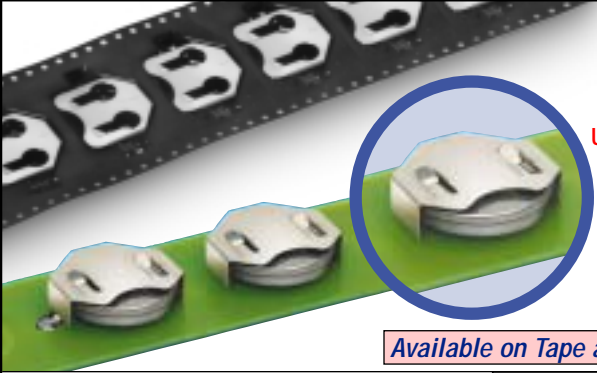
Tape & Reel Spec's: 44mm wide; 32mm pitch; 13 inch reel (200 pieces per reel)



Designers' Choice

COIN CELL RETAINERS & HOLDERS

SURFACE & THRU HOLE MOUNT COIN CELL RETAINER CONTACTS



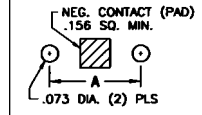
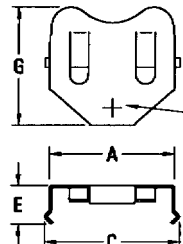
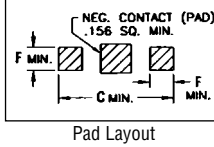
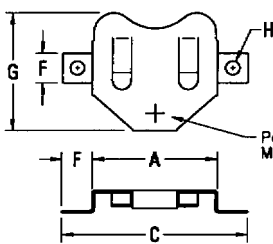
ULTRA-LOW PROFILE!

Available on Tape and Reel

COMPACT CONTACTS

Economical and reliable retainer contacts are designed for quick and easy battery installation and replacement. Perfect for memory back-up applications. Surface and thru hole mount retainer contacts are available for 6.8mm to 24mm lithium coin cell batteries.

- Low profile for densely packed PCBs
- Retains cell securely, withstands shock & vibrations
- Reliable dual spring contacts assure low contact resistance
- Polarity clearly marked (+)
- Stable thru mount legs for increased strength
- Balanced & lightweight for reliable pick-up & placement
- Compatible with vacuum and mechanical pick & place assembly systems
- "Flow-Hole" SMT solder tail design for increased joint strength
- Viewable solder tails assures reliable joint inspection
- All conductive polystyrene carrier tape meets ANSI/EIA - 481 standard



Mounting Detail

Also Available:
Optional negative bottom contact.
(Cat. No. 2990, see page 9)

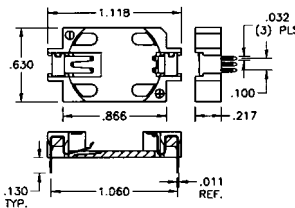
DWG. 1 - SURFACE MOUNT (SMT) MATERIAL: .010 Phosphor Bronze, Nickel Plate

DWG. 2 - THRU HOLE MOUNT (THM) MATERIAL: .010 Phosphor Bronze, Nickel Plate

CAT. NO.	ON TAPE & REEL	DWG. NO.	MTG. TYPE	A	B	C	D	E	F	G	H DIA.	CELL DIA.	BATTERY REFERENCE	TAPE & REEL SPEC'S
2998	2998TR	1	SMT	.315	.197	.421	.114	—	.070 × .200	.315	.064	6.8mm	MC621, V364, SC621	24mm wide; 12mm pitch; 13 inch (1250 pieces per reel)
3000	3000TR	1	SMT	.520	.281	.745	.125	—	.125	.500	.047	12mm	BR1216, CR1216, BR1220, CL1220, CR1220, BR1225	32mm wide; 16mm pitch; 13 inch reel (1000 pieces per reel)
3001	—	2	THM	.520	.281	.585	.118	.210	.062	.500	—	16mm	BR1616, CR1612, CR1616, CR1620, CR1632	44mm wide; 24mm pitch; 13 inch reel (600 pieces per reel)
3012	3012TR	1	SMT	.664	.250	.914	.156	—	.125	.594	.047	20mm	BR2016, CR2016, DL2016, BR2020, CL2020, BR2025, CR2025, DL2025, DR2032, CR2032, DL2032	44mm wide; 24mm pitch; 13 inch reel (500 pieces per reel)
3013	—	2	THM	.664	.250	.723	.145	.265	.062	.594	—	23mm	BR2320, CL2330, CR2320, BR2325, CR2325, DL2325	56mm wide; 32mm pitch; 13 inch reel (400 pieces per reel)
3002	3002TR	1	SMT	.831	.371	1.210	.156	—	.200	.775	.093	23mm	CR2354, DL2354	56mm wide; 32mm pitch; 13 inch reel (200 pieces per reel)
3003	—	2	THM	.831	.371	.890	.145	.265	.062	.775	—	24mm	CR2430, DL2430	56mm wide; 32mm pitch; 13 inch reel (400 pieces per reel)
3004	3004TR	1	SMT	.939	.371	1.339	.145	—	.200	.939	.093	24mm	CR2450, DL2450	56mm wide; 32mm pitch; 13 inch reel (200 pieces per reel)
3005	—	2	THM	.939	.371	1.004	.145	.256	.062	.939	—	24mm	CR2450, DL2450	56mm wide; 32mm pitch; 13 inch reel (200 pieces per reel)
3010	3010TR	1	SMT	.939	.371	1.339	.240	—	.200	.819	.093	24mm	CR2450, DL2450	56mm wide; 32mm pitch; 13 inch reel (200 pieces per reel)
3011	—	2	THM	.939	.371	1.004	.240	.351	.062	.819	—	24mm	CR2450, DL2450	56mm wide; 32mm pitch; 13 inch reel (200 pieces per reel)
3006	3006TR	1	SMT	1.000	.371	1.400	.156	—	.200	.918	.093	24mm	CR2450, DL2450	56mm wide; 32mm pitch; 13 inch reel (200 pieces per reel)
3007	—	2	THM	1.000	.371	1.065	.145	.265	.062	.918	—	24mm	CR2450, DL2450	56mm wide; 32mm pitch; 13 inch reel (200 pieces per reel)
3008	3008TR	1	SMT	1.000	.500	1.400	.230	—	.200	.890	.093	24mm	CR2450, DL2450	56mm wide; 32mm pitch; 13 inch reel (200 pieces per reel)
3009	—	2	THM	1.000	.500	1.059	.230	.350	.062	.890	—	24mm	CR2450, DL2450	56mm wide; 32mm pitch; 13 inch reel (200 pieces per reel)

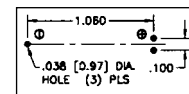
LOW PROFILE SURFACE & THRU HOLE MOUNT COIN CELL HOLDERS

Designed for quick and easy installation and replacement of 2032 coin cell lithium batteries. The contacts of these holders are polarized to assure proper continuity and circuit protection.

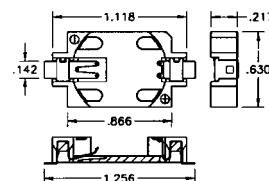


Thru Hole Mount

Mounting Detail

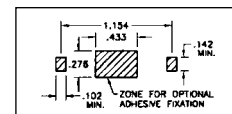


CAT. NO. 1059 (Bulk)



Surface Mount

Pad Layout



CAT. NO. 1060 (Bulk)

CAT. NO. 1060TR (Tape & Reel)

Tape & Reel Spec's: 44mm wide; 24mm pitch; 13 inch reel (500 pieces per reel)

- Polarized Holder
- Retains cell securely to withstand shock and vibration
- Reliable dual spring contacts assure low contact resistance
- Low Profile for densely packaged PCB's
- Compatible with vacuum and mechanical pick & place assembly systems
- Conductive polystyrene carrier tape meets ANSI/EIA - 481 standard

MATERIAL

Contacts: .006 Phosphor Bronze, Electro-Solder over Nickel Plate
Base: Glass Filled LCP, UL Rated 94V-0

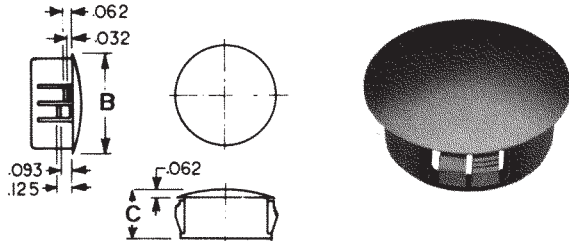
HOLE PLUGS/CABLE CLAMPS

Designers' Choice



NYLON HOLE PLUGS

Closes unused chassis holes quickly and economically. Plugs are abrasion and vibration resistant.

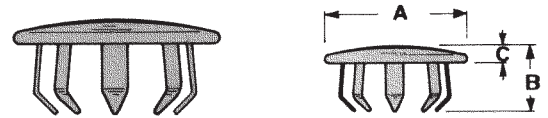


MATERIAL: Black, Nylon 6/6, Matte Finish

CAT. NO.	HOLE DIA.	PANEL THICKNESS	B	C
8600	.250	.062	.312	.312
8601	.312	.062	.375	.312
8602	.375	.125	.468	.406
8603	.500	.125	.578	.406
8604	.625	.125	.734	.406
8605	.750	.125	.921	.406
8606	.875	.125	1.015	.453
8607	1.000	.125	1.203	.453
8608	1.125	.125	1.218	.453
8609	1.250	.125	1.375	.453
8610	1.375	.125	1.500	.453
8611	1.500	.125	1.671	.453

STEEL HOLE PLUGS

Excellent spring retention. Plugs will cover chassis holes, wiring outlets, access holes or unused opening.

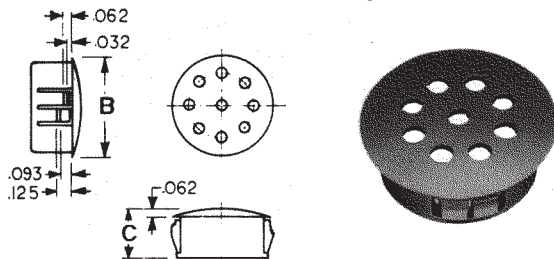


MATERIAL: Steel, Nickel Plate

CAT. NO.	Hole Dia.	Panel Thickness	A	B	C	Prongs
7600	.250	.032-.062	.406	.234	.062	6
7601	.312	.047-.078	.437	.250	.062	6
7602	.375	.047-.062	.500	.234	.062	6
7603	.500	.031-.062	.656	.281	.078	8
7604	.625	.062-.093	.812	.296	.078	8
7605	.750	.062-.093	.921	.296	.078	12
7606	.875	.062-.093	1.062	.296	.062	12
7607	1.000	.062-.156	1.140	.328	.093	12
7608	1.125	.031-.125	1.312	.343	.093	12
7609	1.250	.062-.093	1.437	.343	.093	12
7610	1.375	.031-.125	1.562	.406	.078	12
7611	1.500	.031-.062	1.640	.406	.093	12

NYLON VENT PLUGS

Used to cover chassis holes while allowing air flow for ventilation.



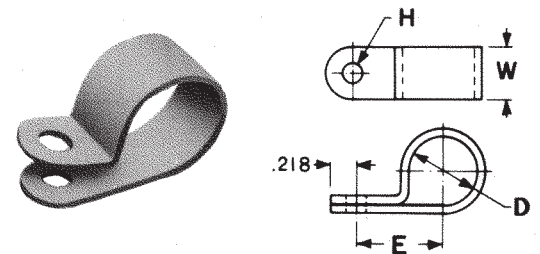
MATERIAL: Black, Nylon 6/6, Matte Finish

CAT. NO.	HOLE DIA.	PANEL THICKNESS	B	C
8612	.875	.125	1.015	.453
8613	1.000	.125	1.203	.453

NYLON CABLE CLAMPS

Ideal for securing, insulating and routing cable wiring, piping, tubing, components and fibre optics.

MATERIAL: White, .050 Nylon 6/6

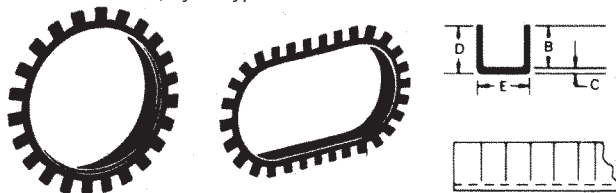


CAT. NO.	D	E	W	H
7620	.125	.325	.375	.140
7621	.125	.325	.375	.203
7622	.187	.380	.375	.140
7623	.187	.380	.375	.203
7624	.250	.410	.375	.140
7625	.250	.410	.375	.203
7626	.312	.445	.375	.140
7627	.312	.445	.375	.203
7628	.375	.475	.375	.140
7629	.375	.475	.375	.203
7630	.437	.525	.375	.140
7631	.437	.525	.375	.203
7632	.500	.550	.375	.140
7633	.500	.550	.375	.203
7634	.562	.625	.500	.203
7635	.625	.660	.500	.203
7636	.750	.785	.500	.203
7637	.875	.845	.500	.203
7638	1.000	.910	.500	.203
7639	1.125	.970	.500	.203
7640	1.250	1.060	.500	.203

FLEXIBLE GROMMETING

Ideal for maintenance, short-run production, R&D or prototyping. Supplied in 25ft. rolls. Make your own grommets to fit any size or shape required.

MATERIAL: Black, Nylon Type 6/6



CAT. NO.	MAX. PANEL	B	C	D	E
8615	.052	.150	.040	.190	.125
8616	.085	.155	.045	.200	.162
8617	.125	.155	.045	.220	.206